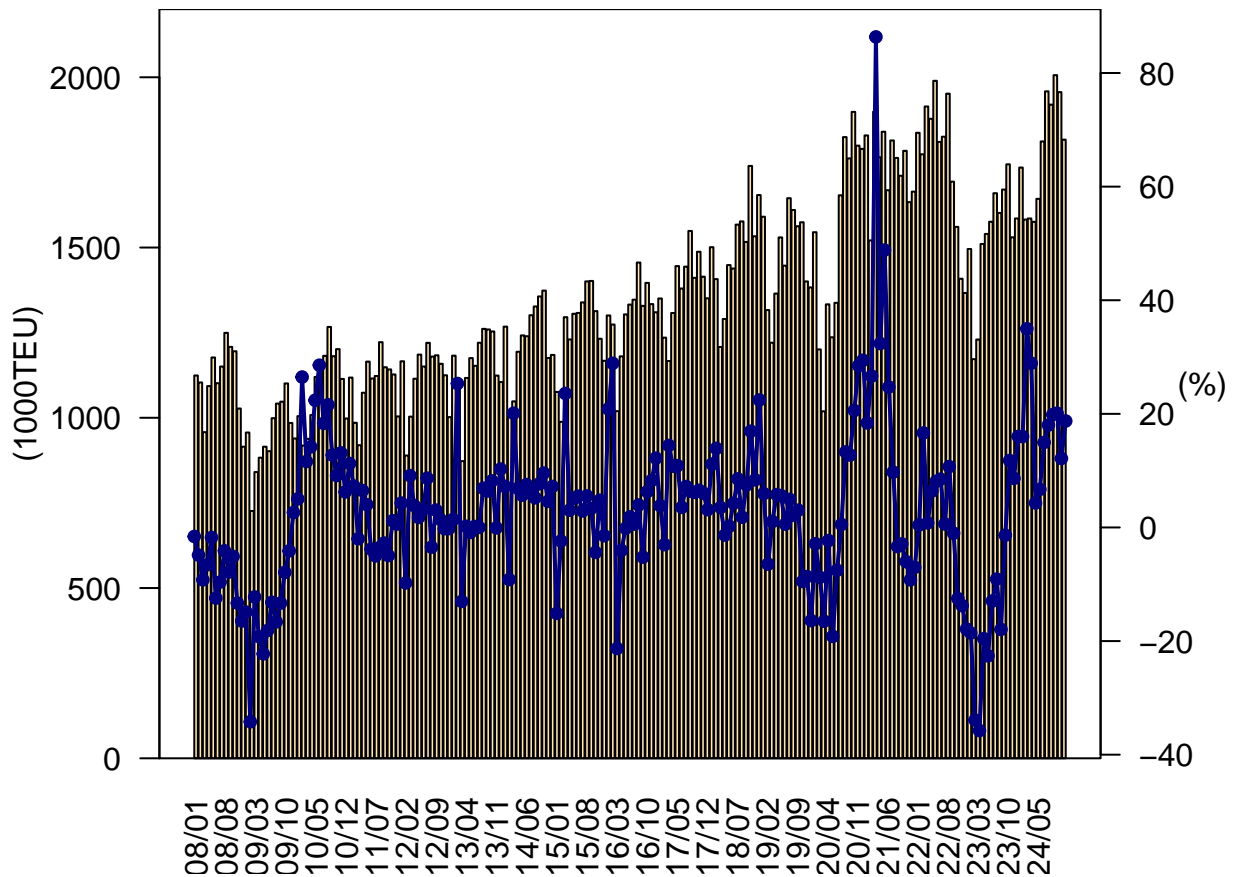
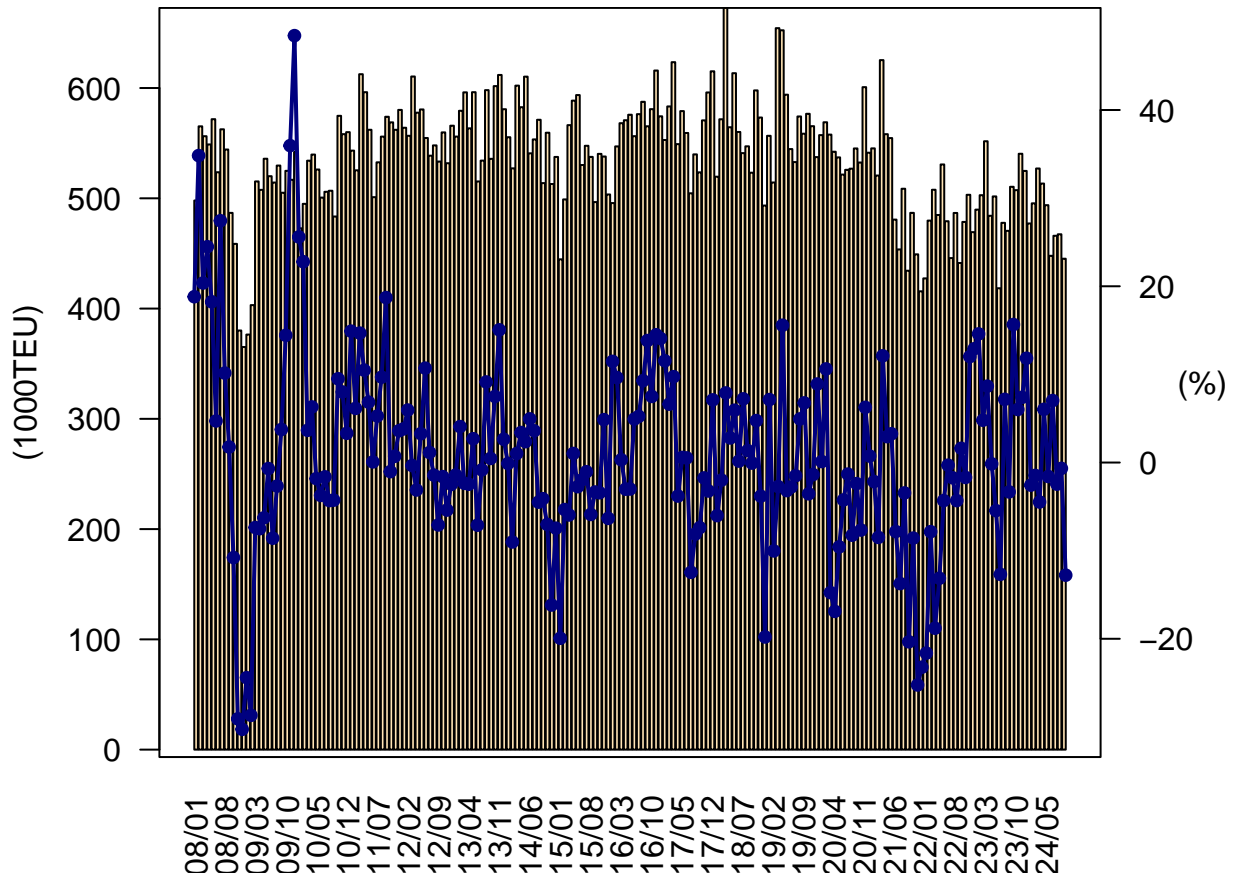


北米往航・月別荷動き量の推移



	2020年		2021年		2022年		2023年		2024年	
	TEU	%	TEU	%	TEU	%	TEU	%	TEU	%
1月	1,544,992	-2.9	1,829,223	18.4	1,837,047	0.4	1,495,645	-18.6	1,734,950	16.0
2月	1,200,865	-8.8	1,520,890	26.6	1,773,871	16.6	1,172,262	-33.9	1,582,261	35.0
3月	1,019,049	-16.5	1,899,045	86.4	1,914,244	0.8	1,229,819	-35.8	1,585,359	28.9
4月	1,333,177	-2.3	1,764,859	32.4	1,878,070	6.4	1,510,469	-19.6	1,575,560	4.3
5月	1,236,385	-19.2	1,840,036	48.8	1,989,633	8.1	1,539,901	-22.6	1,643,031	6.7
6月	1,337,666	-7.5	1,668,372	24.7	1,810,211	8.5	1,575,808	-12.9	1,811,660	15.0
7月	1,653,457	0.5	1,814,437	9.7	1,825,492	0.6	1,659,522	-9.1	1,958,714	18.0
8月	1,824,331	13.3	1,763,122	-3.4	1,951,912	10.7	1,601,664	-17.9	1,919,679	19.9
9月	1,761,781	12.7	1,710,809	-2.9	1,693,459	-1.0	1,670,307	-1.4	2,006,275	20.1
10月	1,898,334	20.6	1,784,058	-6.0	1,560,677	-12.5	1,744,411	11.8	1,956,386	12.2
11月	1,799,282	28.5	1,633,298	-9.2	1,408,409	-13.8	1,530,057	8.6	1,816,805	18.7
12月	1,789,849	29.4	1,664,205	-7.0	1,366,558	-17.9	1,585,423	16.0	-	-
<b>1月-11月</b>	<b>16,609,318</b>	<b>2.1</b>	<b>19,228,150</b>	<b>15.8</b>	<b>19,643,024</b>	<b>2.2</b>	<b>16,729,867</b>	<b>-14.8</b>	<b>19,590,680</b>	<b>17.1</b>
Q1	3,764,906	-8.8	5,249,157	39.4	5,525,162	5.3	3,897,726	-29.5	4,902,570	25.8
Q2	3,907,227	-10.0	5,273,267	35.0	5,677,914	7.7	4,626,179	-18.5	5,030,251	8.7
Q3	5,239,569	8.8	5,288,368	0.9	5,470,862	3.5	4,931,494	-9.9	5,884,668	19.3
Q4	5,487,465	25.9	5,081,561	-7.4	4,335,643	-14.7	4,859,890	12.1	-	-
<b>年合計</b>	<b>18,399,168</b>	<b>4.3</b>	<b>20,892,354</b>	<b>13.6</b>	<b>21,009,582</b>	<b>0.6</b>	<b>18,315,289</b>	<b>-12.8</b>	<b>19,590,680</b>	<b>-</b>

北米復航・月別荷動き量の推移



	2020年		2021年		2022年		2023年		2024年	
	TEU	%	TEU	%	TEU	%	TEU	%	TEU	%
1月	557,315	0.1	545,276	-2.2	427,372	-21.6	489,732	14.6	477,173	-2.6
2月	568,959	10.6	520,645	-8.5	479,781	-7.8	502,812	4.8	495,448	-1.5
3月	557,769	-14.8	625,309	12.1	507,760	-18.8	551,747	8.7	527,041	-4.5
4月	542,224	-16.9	558,165	2.9	484,857	-13.1	484,154	-0.1	513,368	6.0
5月	537,102	-9.6	554,625	3.3	530,684	-4.3	501,708	-5.5	493,769	-1.6
6月	521,520	-4.2	480,673	-7.8	479,206	-0.3	418,424	-12.7	447,844	7.0
7月	525,826	-1.3	453,622	-13.7	445,798	-1.7	477,755	7.2	466,024	-2.5
8月	526,868	-8.2	508,686	-3.5	486,713	-4.3	470,501	-3.3	467,377	-0.7
9月	545,214	-2.4	434,335	-20.3	441,338	1.6	510,450	15.7	445,204	-12.8
10月	532,470	-7.7	486,804	-8.6	478,581	-1.7	507,384	6.0	-	-
11月	600,813	6.3	449,169	-25.2	503,178	12.0	540,406	7.4	-	-
12月	541,350	0.7	415,645	-23.2	469,309	12.9	524,839	11.8	-	-
<b>1月-9月</b>	<b>4,882,797</b>	<b>-5.8</b>	<b>4,681,335</b>	<b>-4.1</b>	<b>4,283,509</b>	<b>-8.5</b>	<b>4,407,283</b>	<b>2.9</b>	<b>4,333,246</b>	<b>-1.7</b>
Q1	1,684,043	-2.4	1,691,230	0.4	1,414,912	-16.3	1,544,291	9.1	1,499,661	-2.9
Q2	1,600,845	-10.6	1,593,462	-0.5	1,494,747	-6.2	1,404,285	-6.1	1,454,981	3.6
Q3	1,597,908	-4.1	1,396,643	-12.6	1,373,849	-1.6	1,458,706	6.2	1,378,604	-5.5
Q4	1,674,633	-0.3	1,351,618	-19.3	1,451,068	7.4	1,572,630	8.4	-	-
<b>年合計</b>	<b>6,557,430</b>	<b>-4.4</b>	<b>6,032,953</b>	<b>-8.0</b>	<b>5,734,577</b>	<b>-4.9</b>	<b>5,979,913</b>	<b>4.3</b>	<b>4,333,246</b>	<b>-</b>