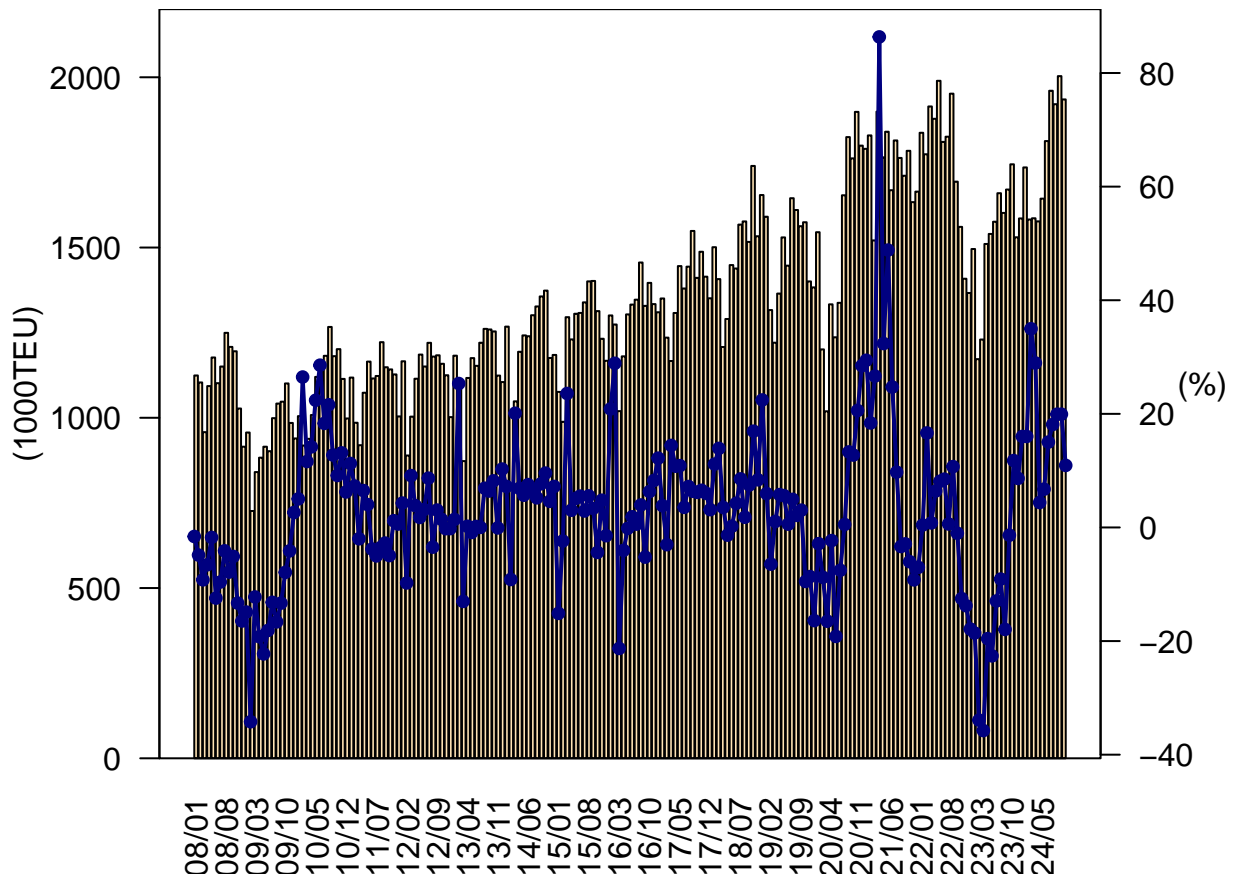
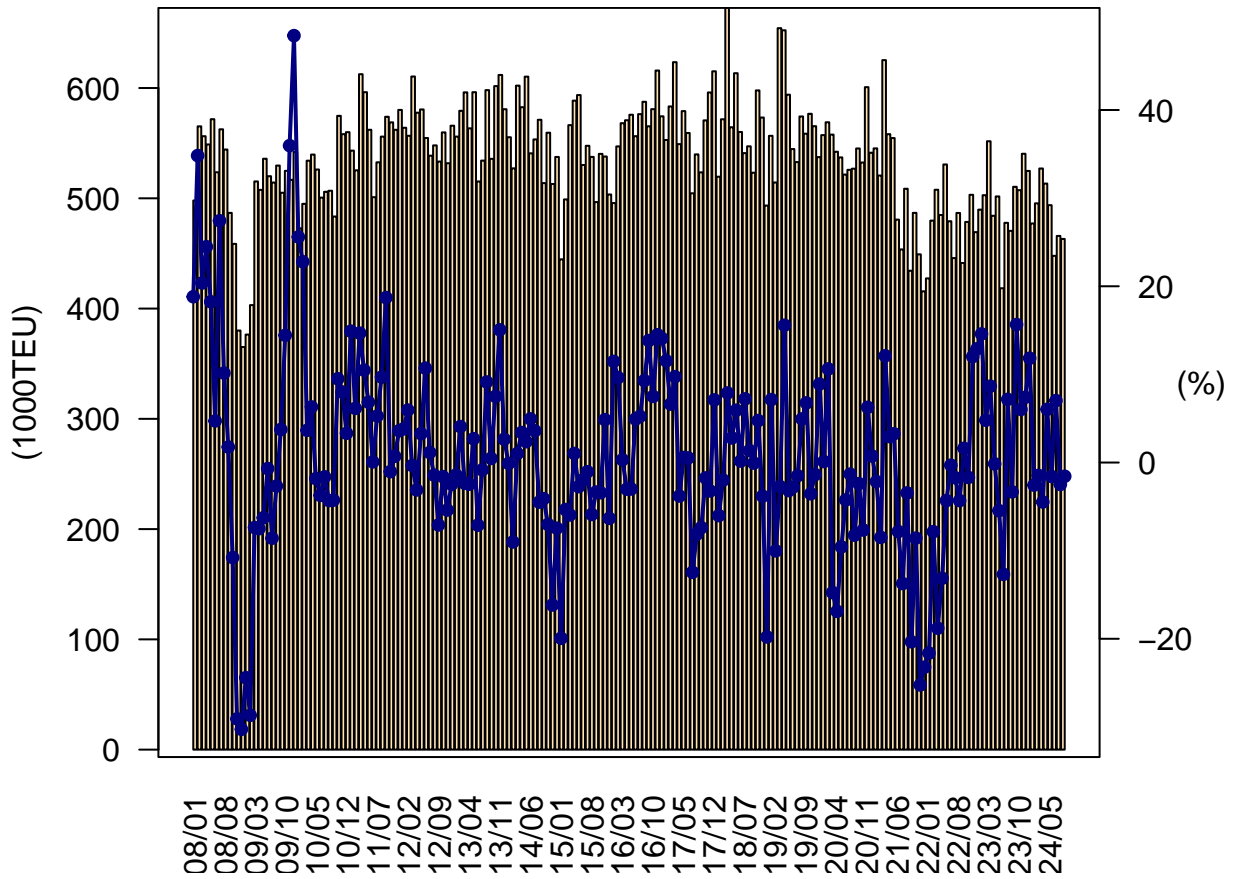


北米往航・月別荷動き量の推移



| | 2020年 | | 2021年 | | 2022年 | | 2023年 | | 2024年 | |
|---------------|-------------------|-------------|-------------------|-------------|-------------------|------------|-------------------|--------------|-------------------|-------------|
| | TEU | % | TEU | % | TEU | % | TEU | % | TEU | % |
| 1月 | 1,544,992 | -2.9 | 1,829,223 | 18.4 | 1,837,047 | 0.4 | 1,495,645 | -18.6 | 1,735,227 | 16.0 |
| 2月 | 1,200,865 | -8.8 | 1,520,890 | 26.6 | 1,773,871 | 16.6 | 1,172,262 | -33.9 | 1,582,339 | 35.0 |
| 3月 | 1,019,049 | -16.5 | 1,899,045 | 86.4 | 1,914,244 | 0.8 | 1,229,819 | -35.8 | 1,585,890 | 29.0 |
| 4月 | 1,333,177 | -2.3 | 1,764,859 | 32.4 | 1,878,070 | 6.4 | 1,510,469 | -19.6 | 1,576,795 | 4.4 |
| 5月 | 1,236,385 | -19.2 | 1,840,036 | 48.8 | 1,989,633 | 8.1 | 1,539,901 | -22.6 | 1,643,589 | 6.7 |
| 6月 | 1,337,666 | -7.5 | 1,668,372 | 24.7 | 1,810,211 | 8.5 | 1,575,808 | -12.9 | 1,812,653 | 15.0 |
| 7月 | 1,653,457 | 0.5 | 1,814,437 | 9.7 | 1,825,492 | 0.6 | 1,659,522 | -9.1 | 1,960,382 | 18.1 |
| 8月 | 1,824,331 | 13.3 | 1,763,122 | -3.4 | 1,951,912 | 10.7 | 1,601,664 | -17.9 | 1,920,921 | 19.9 |
| 9月 | 1,761,781 | 12.7 | 1,710,809 | -2.9 | 1,693,459 | -1.0 | 1,670,307 | -1.4 | 2,003,345 | 19.9 |
| 10月 | 1,898,334 | 20.6 | 1,784,058 | -6.0 | 1,560,677 | -12.5 | 1,744,411 | 11.8 | 1,934,971 | 10.9 |
| 11月 | 1,799,282 | 28.5 | 1,633,298 | -9.2 | 1,408,409 | -13.8 | 1,530,057 | 8.6 | - | - |
| 12月 | 1,789,849 | 29.4 | 1,664,205 | -7.0 | 1,366,558 | -17.9 | 1,585,423 | 16.0 | - | - |
| 1月-10月 | 14,810,036 | -0.3 | 17,594,851 | 18.8 | 18,234,616 | 3.6 | 15,199,810 | -16.6 | 17,756,111 | 16.8 |
| Q1 | 3,764,906 | -8.8 | 5,249,157 | 39.4 | 5,525,162 | 5.3 | 3,897,726 | -29.5 | 4,903,456 | 25.8 |
| Q2 | 3,907,227 | -10.0 | 5,273,267 | 35.0 | 5,677,914 | 7.7 | 4,626,179 | -18.5 | 5,033,036 | 8.8 |
| Q3 | 5,239,569 | 8.8 | 5,288,368 | 0.9 | 5,470,862 | 3.5 | 4,931,494 | -9.9 | 5,884,647 | 19.3 |
| Q4 | 5,487,465 | 25.9 | 5,081,561 | -7.4 | 4,335,643 | -14.7 | 4,859,890 | 12.1 | - | - |
| 年合計 | 18,399,168 | 4.3 | 20,892,354 | 13.6 | 21,009,582 | 0.6 | 18,315,289 | -12.8 | 17,756,111 | - |

北米復航・月別荷動き量の推移



| | 2020年 | | 2021年 | | 2022年 | | 2023年 | | 2024年 | |
|--------------|------------------|-------------|------------------|-------------|------------------|-------------|------------------|------------|------------------|-------------|
| | TEU | % | TEU | % | TEU | % | TEU | % | TEU | % |
| 1月 | 557,315 | 0.1 | 545,276 | -2.2 | 427,372 | -21.6 | 489,732 | 14.6 | 477,173 | -2.6 |
| 2月 | 568,959 | 10.6 | 520,645 | -8.5 | 479,781 | -7.8 | 502,812 | 4.8 | 495,447 | -1.5 |
| 3月 | 557,769 | -14.8 | 625,309 | 12.1 | 507,760 | -18.8 | 551,747 | 8.7 | 527,041 | -4.5 |
| 4月 | 542,224 | -16.9 | 558,165 | 2.9 | 484,857 | -13.1 | 484,154 | -0.1 | 513,368 | 6.0 |
| 5月 | 537,102 | -9.6 | 554,625 | 3.3 | 530,684 | -4.3 | 501,708 | -5.5 | 493,770 | -1.6 |
| 6月 | 521,520 | -4.2 | 480,673 | -7.8 | 479,206 | -0.3 | 418,424 | -12.7 | 447,819 | 7.0 |
| 7月 | 525,826 | -1.3 | 453,622 | -13.7 | 445,798 | -1.7 | 477,755 | 7.2 | 465,875 | -2.5 |
| 8月 | 526,868 | -8.2 | 508,686 | -3.5 | 486,713 | -4.3 | 470,501 | -3.3 | 463,156 | -1.6 |
| 9月 | 545,214 | -2.4 | 434,335 | -20.3 | 441,338 | 1.6 | 510,450 | 15.7 | - | - |
| 10月 | 532,470 | -7.7 | 486,804 | -8.6 | 478,581 | -1.7 | 507,384 | 6.0 | - | - |
| 11月 | 600,813 | 6.3 | 449,169 | -25.2 | 503,178 | 12.0 | 540,406 | 7.4 | - | - |
| 12月 | 541,350 | 0.7 | 415,645 | -23.2 | 469,309 | 12.9 | 524,839 | 11.8 | - | - |
| 1月-8月 | 4,337,583 | -6.2 | 4,247,000 | -2.1 | 3,842,171 | -9.5 | 3,896,832 | 1.4 | 3,883,647 | -0.3 |
| Q1 | 1,684,043 | -2.4 | 1,691,230 | 0.4 | 1,414,912 | -16.3 | 1,544,291 | 9.1 | 1,499,660 | -2.9 |
| Q2 | 1,600,845 | -10.6 | 1,593,462 | -0.5 | 1,494,747 | -6.2 | 1,404,285 | -6.1 | 1,454,957 | 3.6 |
| Q3 | 1,597,908 | -4.1 | 1,396,643 | -12.6 | 1,373,849 | -1.6 | 1,458,706 | 6.2 | - | - |
| Q4 | 1,674,633 | -0.3 | 1,351,618 | -19.3 | 1,451,068 | 7.4 | 1,572,630 | 8.4 | - | - |
| 年合計 | 6,557,430 | -4.4 | 6,032,953 | -8.0 | 5,734,577 | -4.9 | 5,979,913 | 4.3 | 3,883,647 | - |